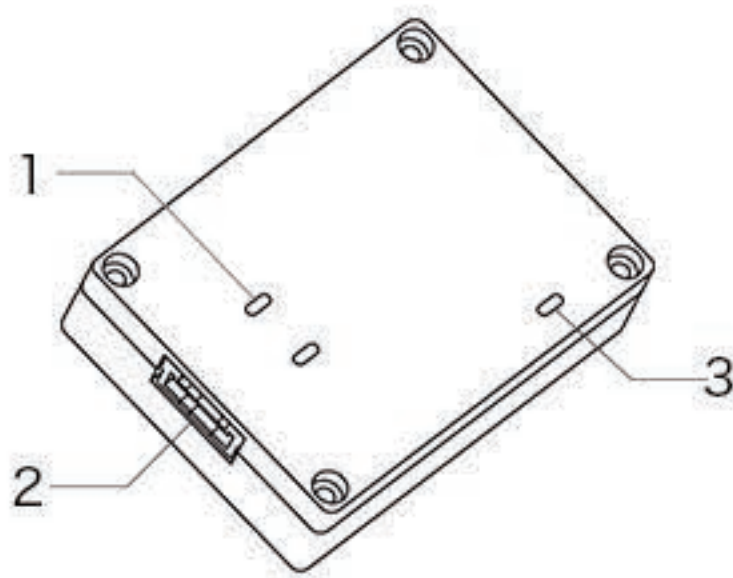


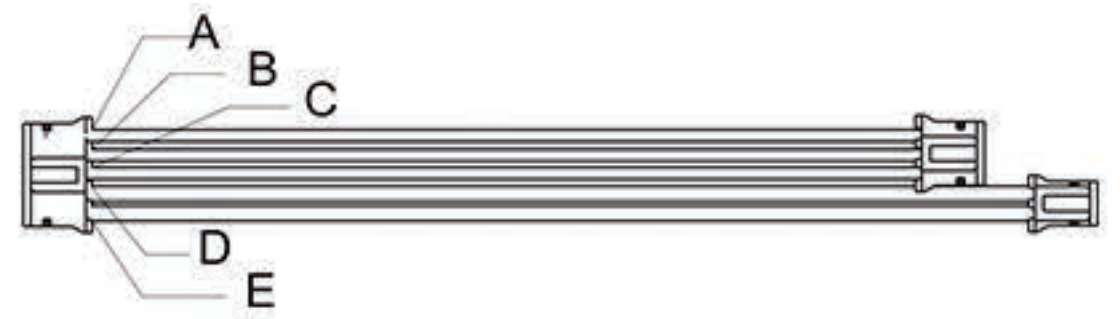
R-LINK USAGE INSTRUCTIONS

RUBIK LINK (R-LINK) IS A USB TO SERIAL PORT MODULE

INTERFACE AND LINE SEQUENCE DESCRIPTION



- 1. signal indicator, 2. serial port
- 3. Power indicator (always on after power on)

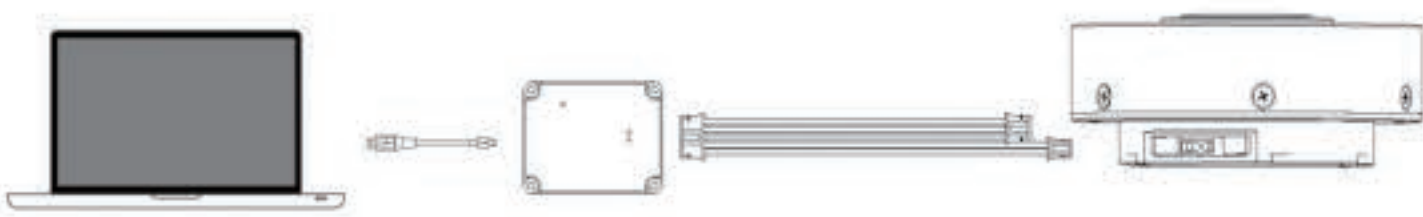


Line sequence: from top to bottom are A black (GND), B yellow (TX), C green (RX), D white (CAN_H), E blue (CAN_L)

ADJUSTABLE PARAMETERS SOFTWARE

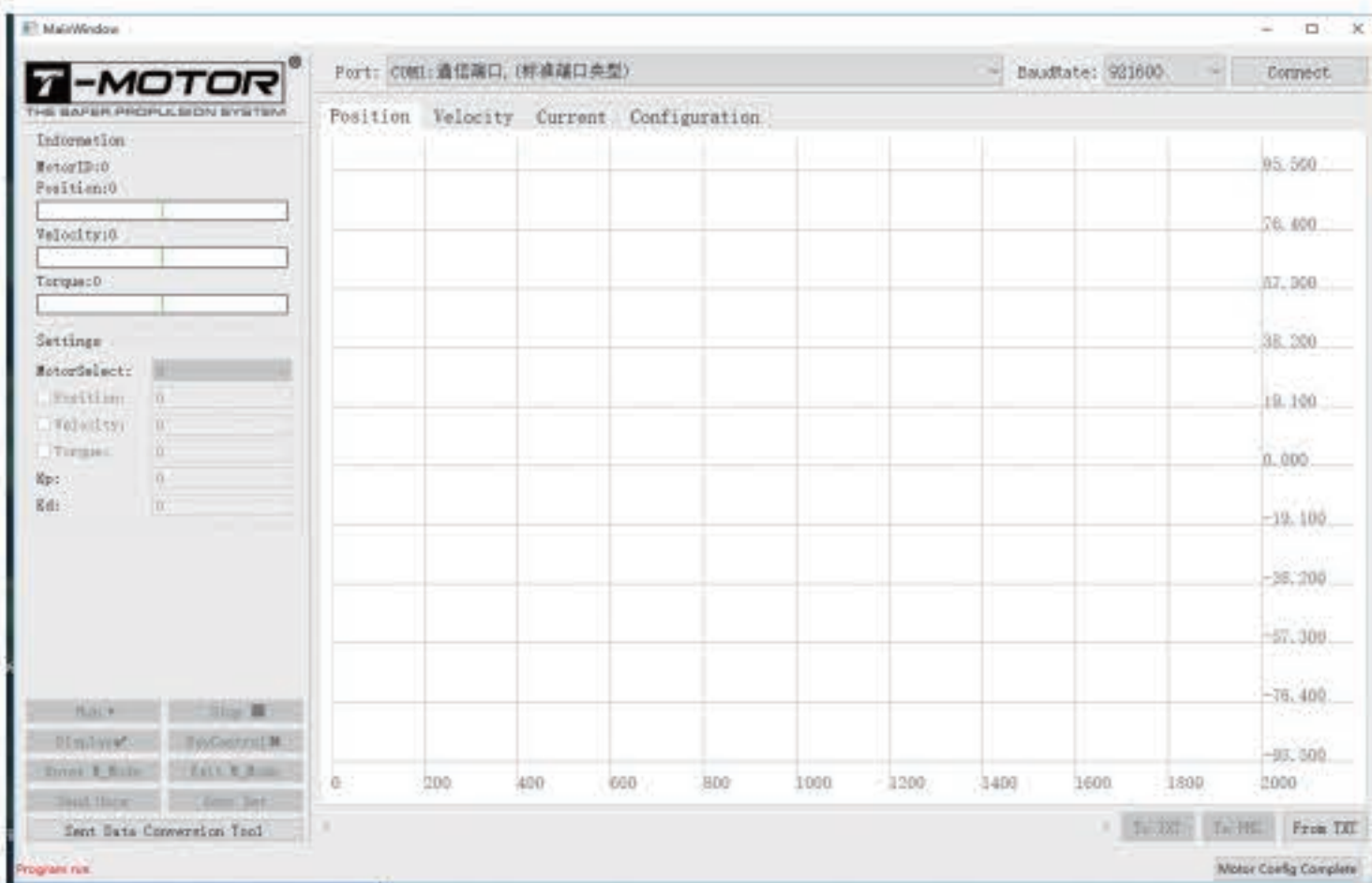
Connect the motor to the computer using the R-Link and set the parameters of the motor.

1. Use matching signal line, connect motor and R-Link, 2p interface is CAN, 3p interface is serial port signal. And then connect the USB turn serial port tool to the computer.



2. Connect the power supply to power the motor, do not cut off the power supply or connection before setting is completed.
3. Run the adjustable parameters software. After the software interface selects the serial port, click CONNECT to connect. After selecting the motor, click ENTER_MA_MODE to enter the motor mode for debugging.

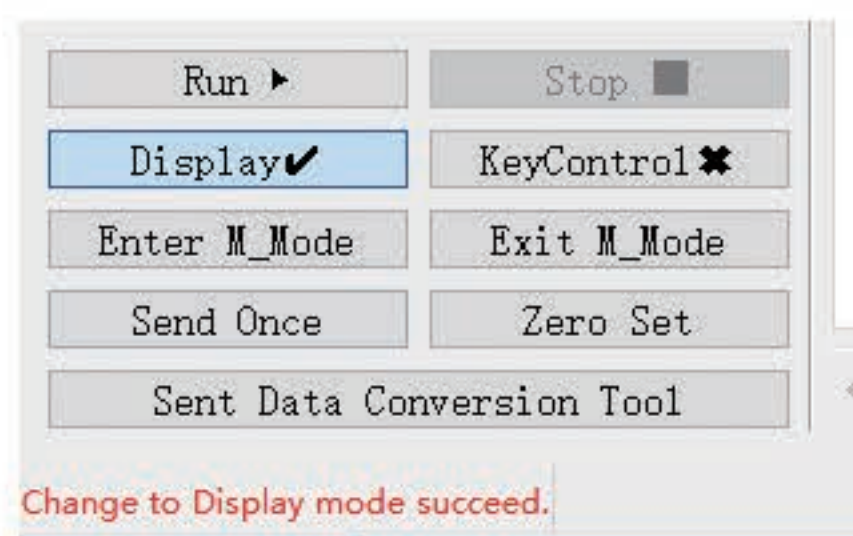
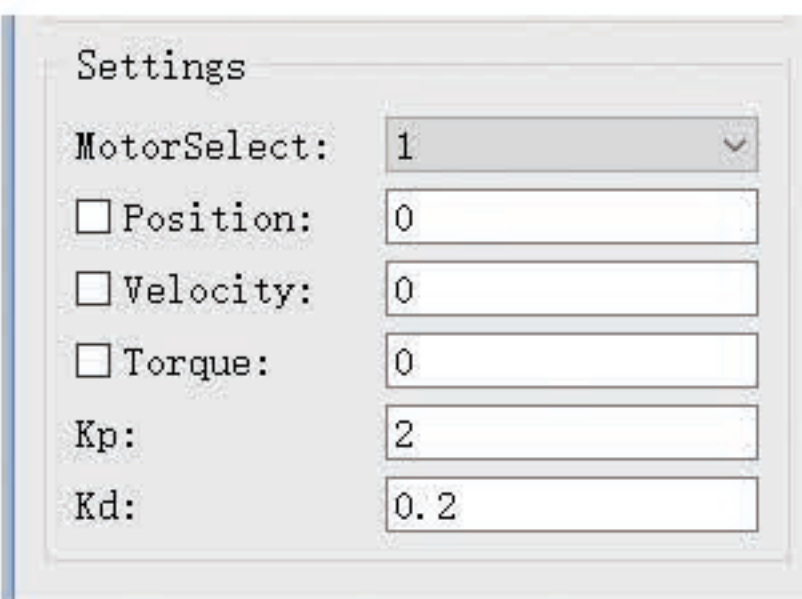
OPEN THE SOFTWARE AND SEE THE FOLLOWING INTERFACE



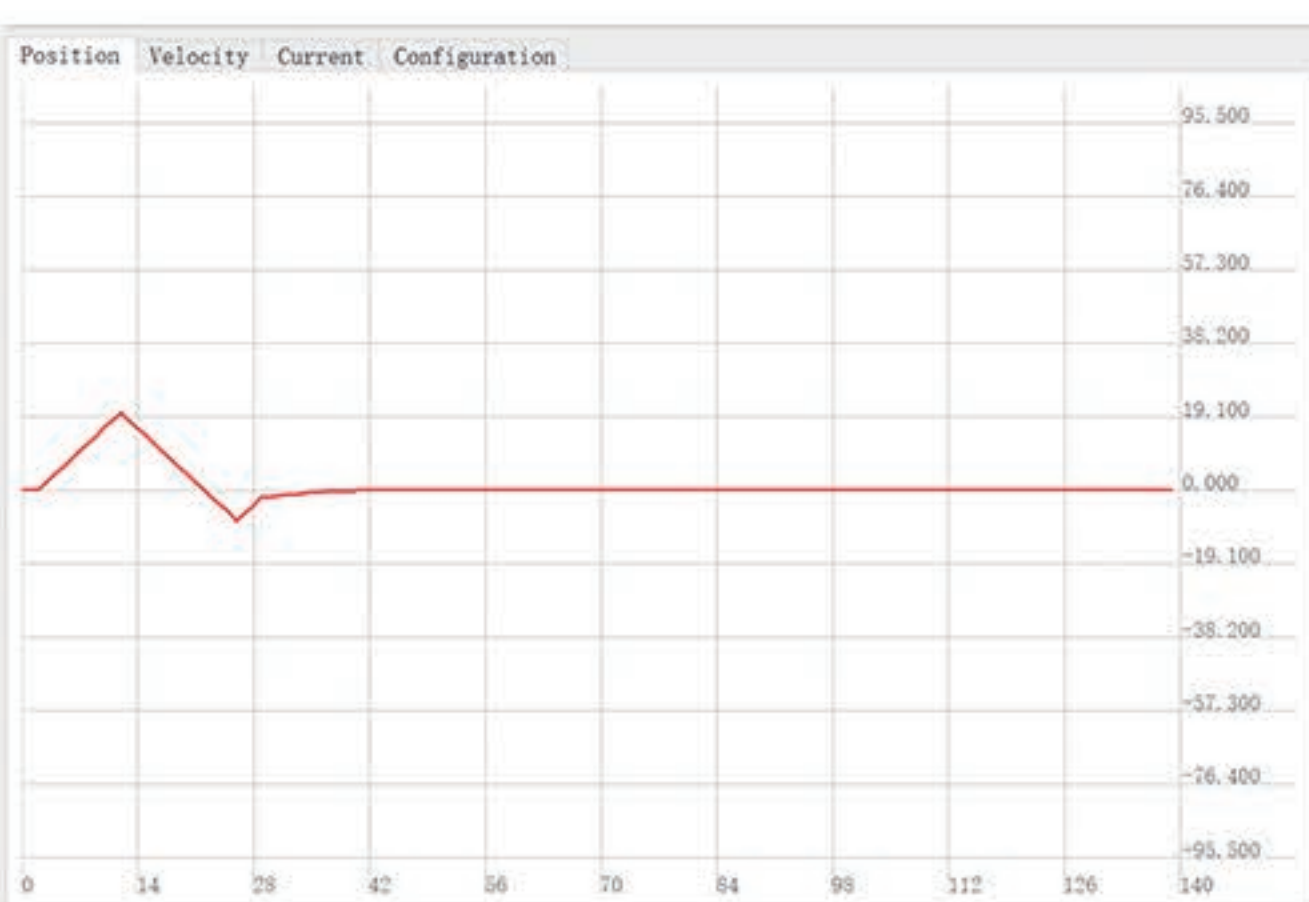
Select serial port (USB-SERIAL_CH340_wch.cp), then click "connect"



MotorSelect select motor, Position: motor position
Velocity: Motor Speed, Current: motor torque
Kp, Kd: PID coefficient



After Click on the "Enter M_Mode",
The green light means the motor enters motor mode.



The three labels display the data curve of position, velocity and current respectively.